

MONTHLY MEMBERSHIP PROGRESS REPORT

District 31 S

Results as of: 4/30/2026

GMT:

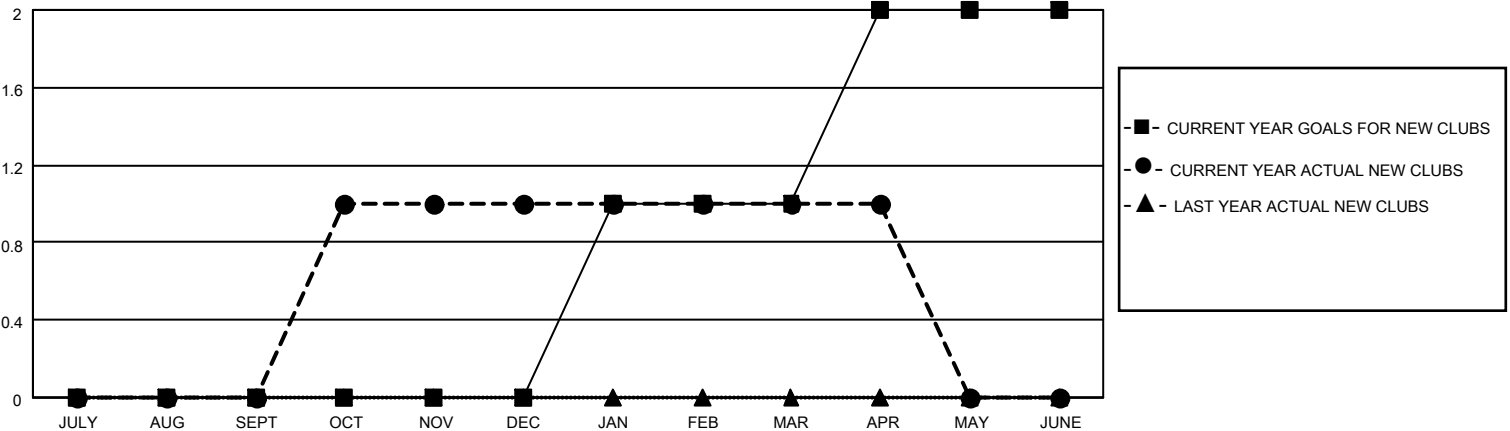
LOCATION NORTH CAROLINA

GMT CA

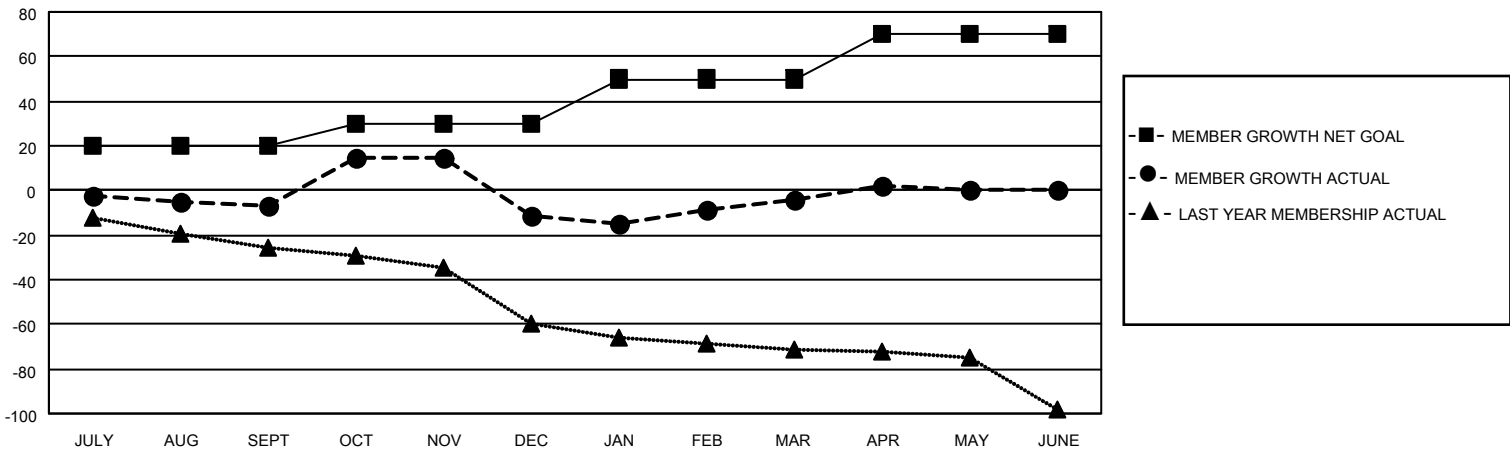
Clubs			
RESULTS FOR 2025-2026			
QUARTER	NEW CLUB GOAL	NEW CLUBS	DROPPED CLUBS
JULY/AUG/SEPT	0	0	0
OCT/NOV/DEC	0	1	2
JAN/FEB/MAR	1	0	1
APR/MAY/JUNE	1	0	0

Members			
RESULTS FOR 2025-2026			
QUARTER	MEMBER GROWTH NET GOAL	MEMBER GROWTH ACTUAL	DROPPED MEMBERS ACTUAL (including transfers)
JULY/AUG/SEPT	20	18	23
OCT/NOV/DEC	10	38	40
JAN/FEB/MAR	20	34	24
APR/MAY/JUNE	20	12	5

GOALS AND ACTUAL NEW CLUBS CUMULATIVE



GOALS AND ACTUAL MEMBERS CUMULATIVE



DROPPED CLUBS: 3	18 CLUBS OF 44 ADDED 1 OR MORE NEW MEMBERS	GENDER DISTRIBUTION
		MALE 558 (69.66%)
		FEMALE 243 (30.34%)
DROPPED MEMBERS	CLICK HERE FOR CUMULATIVE MEMBERSHIP DATA	TOTAL FAMILY UNIT MEMBERS 167
DECEASED 12		FAMILY MEMBERS PAYING HALF DUES 87
CLUB CANCELLED 12		
OTHER 68		
TOTAL 92		